

\$987,400 - 240 Grove Valley Ct, CHALFONT

MLS® #PABU2045654

\$987,400

5 Bedroom, 4.00 Bathroom, 3,291 sqft
Residential on 0 Acres

GROVE VALLEY FARM, CHALFONT, PA

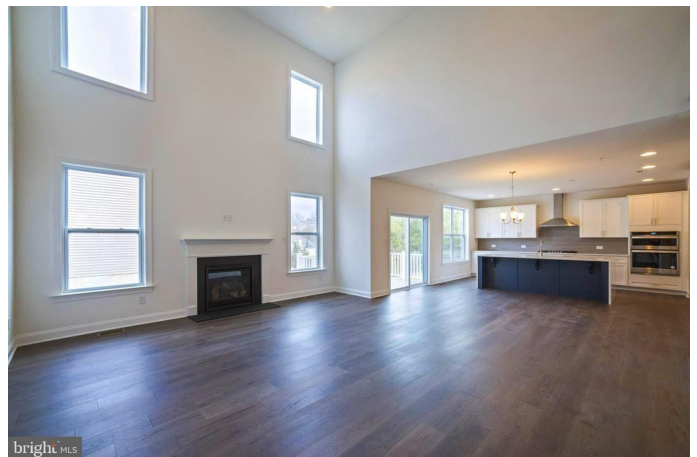
This Stanton Classical is ready for you to move-in July 2023. This home features a 1st floor guest suite AND 1st floor office, dramatic two-story family room with fireplace, eat-in chef's kitchen with center island and walk-in pantry. The spacious owner's suite has a raised ceiling height and two walk-in closets. The 2nd floor catwalk overlooks the two-story family room as it leads to three additional bedrooms and 2 more bathrooms, also on the 2nd floor. Additional features include 10'x16' composite deck overlooking the property, formal dining room with crown molding, a walk-out basement and upgraded electrical throughout.

Photos are representative of a previous home. Ideally situated near commuter routes with easy access to Routes 476, 202, 309 and 611. Please note, Hardscaping limited due to impervious coverage restrictions. Taxes are an estimate only.

Built in 2022

Essential Information

MLS® #	PABU2045654
Sold Price	\$987,400
Bedrooms	5
Bathrooms	4.00
Full Baths	4
Square Footage	3,291
Acres	0.18



Year Built	2022
Type	Residential
Sub-Type	Detached
Style	Other
Status	Closed
Sold Date	June 30th, 2023

Community Information

Address	240 Grove Valley Ct
Area	Warrington Twp (10150)
Subdivision	GROVE VALLEY FARM
City	CHALFONT
County	BUCKS-PA
State	PA
Zip Code	18914

Amenities

Amenities	Butlers Pantry, Chair Railing, Crown Molding, Formal/Separate Dining Room, Pantry, Soaking Tub, Sprinkler System, Tub Shower, Stall Shower, Walk-in Closet(s)
Utilities	Propane
# of Garages	2
Garages	Garage - Front Entry, Garage Door Opener

Interior

Interior Features	Floor Plan-Open
Heating	90% Forced Air, Forced Air
Cooling	Central A/C, Multi Units, Zoned
Fireplace	Yes
# of Fireplaces	1
Fireplaces	Gas/Propane
# of Stories	2
Stories	2 Story

Exterior

Exterior	Concrete/Block, Vinyl Siding
Roof	Asphalt
Foundation	Passive Radon Mitigation

School Information

District	CENTRAL BUCKS
Elementary	MILL CREEK
Middle	UNAMI
High	CENTRAL BUCKS HIGH SCHOOL SOUTH

Additional Information

Zoning	RA
--------	----

Listing Details

Listing Office	Fusion PHL Realty, LLC
----------------	------------------------

© 2024 TREND, All Rights Reserved. Information Deemed Reliable But Not Guaranteed.The data relating to real estate for sale on this website appears in part through the TREND Internet Data Exchange program, a voluntary cooperative exchange of property listing data between licensed real estate brokerage firms in which RE/MAX Elite Bucks County Real Estate participates, and is provided by TREND through a licensing agreement.The information provided by this website is for the personal, non-commercial use of consumers and may not be used for any purpose other than to identify prospective properties consumers may be interested in purchasing.Some properties which appear for sale on this website may no longer be available because they are under contract, have sold or are no longer being offered for sale.

Listing information last updated on May 15th, 2024 at 1:45am EDT