

\$229,900 - 598 Belmont Ave #j-205, SOUTHAMPTON

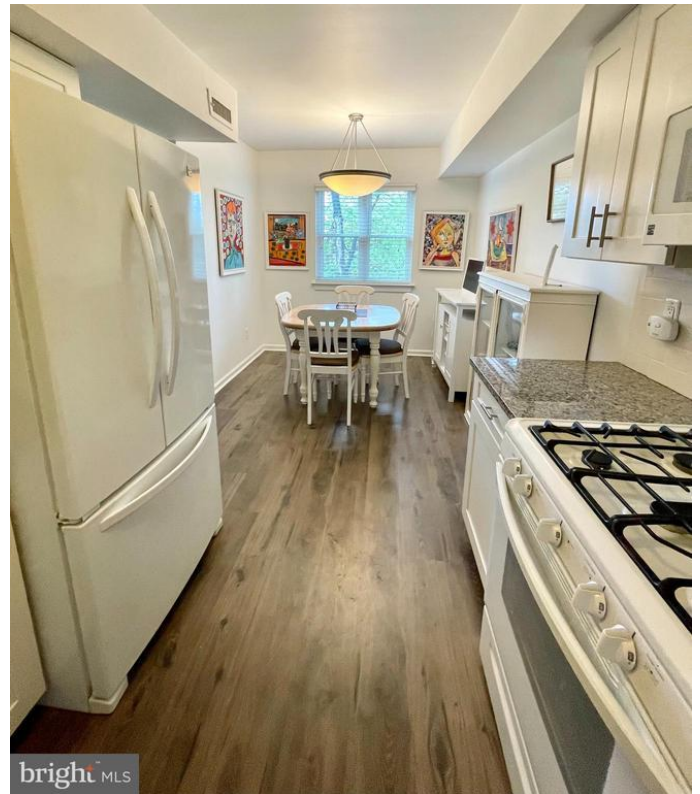
MLS® #PABU2046516

\$229,900

1 Bedroom, 1.00 Bathroom,
Residential on 0 Acres

HAMPTON CROSSING, SOUTHAMPTON, PA

Welcome to this beautiful 1 bedroom condo for easy living in the desirable Hampton Crossing Community. Upgrades galore!! Newly remodeled bright kitchen with granite countertops, newer dishwasher (which most units don't have), garbage disposal, soft close cabinets and drawers. There is plenty of storage space, upgraded appliances which are included. Spacious living room with sliders overlooks patio to serene wooded area and also has a private storage room. Bathroom is newly updated with ceramic tile, tub, sink, toilet & fixtures. Very spacious bedroom with plush newer carpets featuring custom mirrored closets with organizers from Closets by Design. Crown molding throughout as well as fresh paint and flooring. Updated hot water heater & washer and dryer which are included. Move-in ready. Gas, heat & pool included in HOA fee. Many upgrades you have to see to appreciate. Don't miss out on this beauty!



Built in 1988

Essential Information

MLS® #	PABU2046516
Sold Price	\$229,900
Bedrooms	1
Bathrooms	1.00
Full Baths	1
Acres	0.00
Year Built	1988

Type	Residential
Sub-Type	Condo, Unit/Flat/Apartment, Garden 1 - 4 Floors
Style	Condo/Unit
Status	Closed
Sold Date	June 19th, 2023

Community Information

Address	598 Belmont Ave #j-205
Area	Upper Southampton Twp (10148)
Subdivision	HAMPTON CROSSING
City	SOUTHAMPTON
County	BUCKS-PA
State	PA
Zip Code	18966

Amenities

Amenities	Built-Ins, Carpet, CeilingFan(s), Crown Molding, Upgraded Countertops, Shades/Blinds
Utilities	Cable TV, Under Ground
Parking Spaces	1
Parking	Assigned
View	Trees/Woods
Has Pool	Yes

Interior

Appliances	Built-In Microwave, Built-In Range, Cooktop, Dishwasher, Disposal, Dryer - Electric, Exhaust Fan, Icemaker, Refrigerator, Washer, Oven/Range-Gas
Heating	Central
Cooling	Central A/C
# of Stories	1
Stories	1 Story

Exterior

Exterior	Brick and Siding
Exterior Features	Exterior Lighting, Sidewalks, Secure Storage
Lot Description	Backs to Trees, Level
Windows	Sliding, Screens
Roof	Shingle

School Information

District	CENTENNIAL
Elementary	DAVIS
Middle	KLINGER
High	WILLIAM TENNENT

Additional Information

Zoning	R5
--------	----

Listing Details

Listing Office	Montague - Canale Real Estate
----------------	-------------------------------

© 2024 TREND, All Rights Reserved. Information Deemed Reliable But Not Guaranteed.The data relating to real estate for sale on this website appears in part through the TREND Internet Data Exchange program, a voluntary cooperative exchange of property listing data between licensed real estate brokerage firms in which RE/MAX Elite Bucks County Real Estate participates, and is provided by TREND through a licensing agreement.The information provided by this website is for the personal, non-commercial use of consumers and may not be used for any purpose other than to identify prospective properties consumers may be interested in purchasing.Some properties which appear for sale on this website may no longer be available because they are under contract, have sold or are no longer being offered for sale.

Listing information last updated on May 19th, 2024 at 2:15pm EDT