

\$2,200,000 - 13 Meadowbrook Ct, NEW HOPE

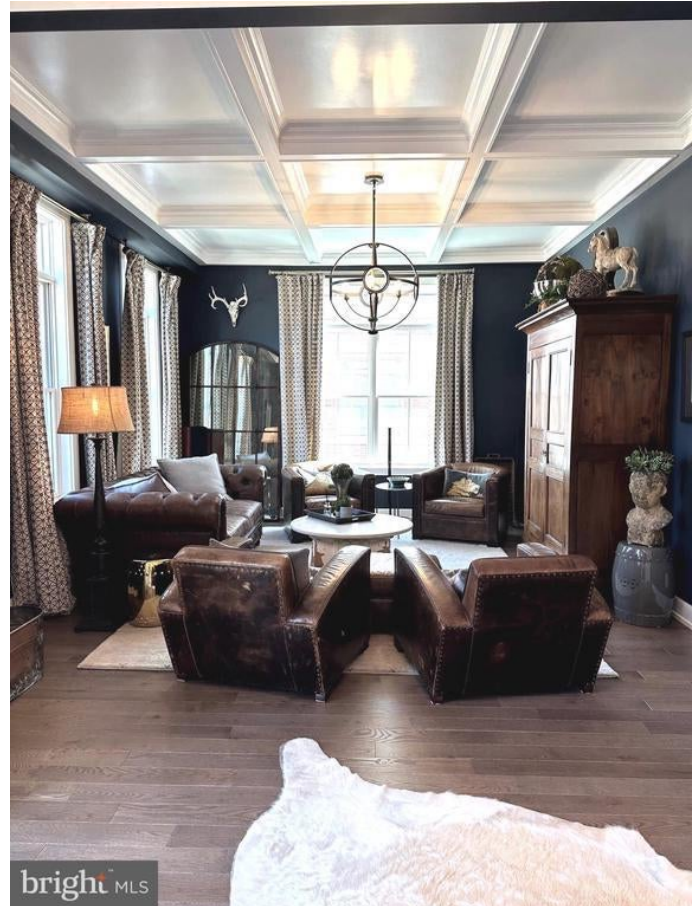
MLS® #PABU2047066

\$2,200,000

4 Bedroom, 4.50 Bathroom, 4,937 sqft
Residential on 0 Acres

RABBIT RUN CREEK, NEW HOPE, PA

Welcome to Rabbit Run Creek, an exclusive enclave located in the charming River Town of New Hope, Pennsylvania. As the only gated community in New Hope, Rabbit Run Creek offers a unique living experience of privacy and security. This idyllic community is nestled in a picturesque setting surrounded by lush greenery and serene waterways. The homes at Rabbit Run Creek are designed to provide the ultimate in luxury and comfort, featuring spacious living areas, high-end finishes, and top-of-the-line appliances. With upgrades too abundant to list and PREMIUM location, this unit is unparalleled. With an open concept floor plan, this home will not disappoint. The kitchen with huge island, Wolf 5 burner commercial range with Full Size Oven, Wolf Wall Oven and Wolf Built-in Microwave, Subzero side-by-side, Commercial grade hood, Bosch dishwasher, counter tops and island in a stunning honed marble. The wine bar and coffee station has a SubZero wine fridge with two sub zero refrigerator drawers, a Subzero ice maker, and tons of cabinetry. The great room has a gas fireplace with custom poured cement mantle. The separate living room with coffered ceiling sits just off the formal entrance along with the home office. Upstairs is the huge Main Suite with incredible ensuite bathroom, large soaking tub, incredibly large walk-in shower. And, the main suite walk-in closet with island perfectly finishes this suite. There are 2 other en-suites, potential for a 3rd bedroom on the Upper Level, and



laundry!! The lower level is finished with a guest bedroom and full bath, and there is plenty of room for storage!! The rear patio was also an upgrade as it is much larger than most of the other units with stone privacy wall and wolf commercial outdoor grill!! Located just minutes from the vibrant town center of New Hope, Rabbit Run Creek provides easy access to a wide range of restaurants, shops, and entertainment venues. With its unparalleled combination of luxury, security, and natural beauty, Rabbit Run Creek is truly a one-of-a-kind community.

Built in 2020

Essential Information

| | |
|----------------|--|
| MLS® # | PABU2047066 |
| Sold Price | \$2,200,000 |
| Bedrooms | 4 |
| Bathrooms | 4.50 |
| Full Baths | 4 |
| Half Baths | 1 |
| Square Footage | 4,937 |
| Acres | 0.00 |
| Year Built | 2020 |
| Type | Residential |
| Sub-Type | End of Row/Townhouse |
| Style | Colonial, Transitional, Carriage House |
| Status | Closed |
| Sold Date | July 27th, 2023 |

Community Information

| | |
|-------------|-----------------------|
| Address | 13 Meadowbrook Ct |
| Area | New Hope Boro (10127) |
| Subdivision | RABBIT RUN CREEK |
| City | NEW HOPE |
| County | BUCKS-PA |
| State | PA |
| Zip Code | 18938 |

Amenities

| | |
|--------------|---|
| Amenities | Built-Ins, CeilingFan(s), Chair Railing, Crown Molding, Elevator, Exposed Beams, Butlers Pantry |
| # of Garages | 2 |
| Garages | Covered Parking, Built In, Garage Door Opener, Inside Access, Garage - Rear Entry |

Interior

| | |
|-------------------|--|
| Interior Features | Floor Plan-Open, Efficiency |
| Appliances | Built-In Microwave, Dishwasher, Disposal, Dryer, Range hood, Refrigerator, Dryer-front loading, Microwave, Oven-Double, Oven-Wall, Washer-front loading, Water Heater, Cooktop, Energy Star Appliances, Dual Flush Toilets |
| Heating | Forced Air |
| Cooling | Central A/C |
| Fireplace | Yes |
| # of Fireplaces | 1 |
| # of Stories | 3 |
| Stories | 3 |

Exterior

| | |
|-------------------|------------------------------|
| Exterior | Frame |
| Exterior Features | Exterior Lighting, BBQ Grill |
| Foundation | Concrete Perimeter |

School Information

| | |
|------------|-------------------|
| District | NEW HOPE-SOLEBURY |
| Elementary | NEW HOPE-SOLEBURY |
| Middle | NEW HOPE-SOLEBURY |
| High | NEW HOPE-SOLEBURY |

Additional Information

| | |
|--------|----|
| Zoning | RB |
|--------|----|

Listing Details

| | |
|----------------|---------------------------|
| Listing Office | Biello & Black Group, LLC |
|----------------|---------------------------|

© 2024 TREND, All Rights Reserved. Information Deemed Reliable But Not Guaranteed. The data relating to real estate for sale on this website appears in part through the TREND Internet Data Exchange program, a voluntary cooperative exchange of property listing data between licensed real estate brokerage firms in which RE/MAX Elite Bucks County Real Estate participates, and is provided by TREND through a licensing agreement. The information provided by this website is for the personal, non-commercial use of consumers and may not be used for any purpose other than to

identify prospective properties consumers may be interested in purchasing. Some properties which appear for sale on this website may no longer be available because they are under contract, have sold or are no longer being offered for sale.

Listing information last updated on May 3rd, 2024 at 5:16pm EDT