

# \$1,200,000 - 1791 Jockeys Way, YARDLEY

MLS® #PABU2047468

---

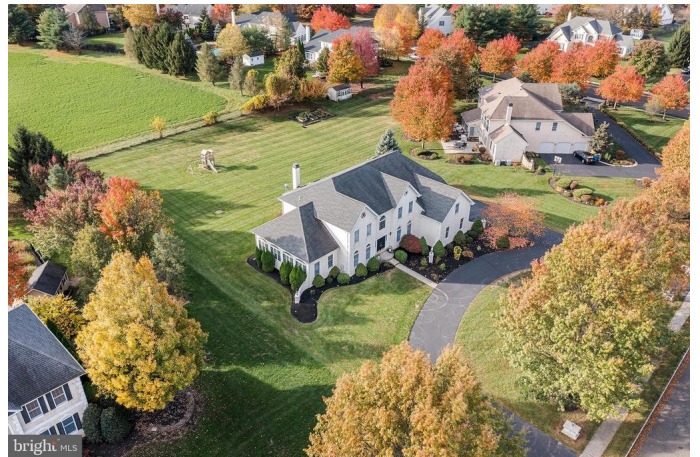
## \$1,200,000

4 Bedroom, 3.50 Bathroom, 4,597 sqft  
Residential on 1 Acres

### BRIDLE ESTATES, YARDLEY, PA

Welcome to 1791 Jockeys Way—a beautiful grand 4-bedroom home in Bridle Estates on a quiet street backing up to 40 acres of preserved farmland. Entering the double front doors, you'll see the foyer with the dramatic center staircase that leads to an open 2nd floor catwalk overlooking the 2nd story. The foyer is flanked by the formal living and dining rooms, featuring beautiful wainscoting, custom crown molding on the 10' high ceilings, neutral paint and 7" wide plank hardwood floors throughout. Family room with newer modern floor to ceiling stack stone wood burning fireplace. Soaring cathedral ceiling with skylights fill the room with natural sunlight.

Formal dining room open to the incredible newer gourmet kitchen with breakfast area and french door out to the large composite deck. The features beautiful white cabinetry, a huge island with thick waterfall Quartz countertop. Stainless steel gas range, oven, microwave drawer, refrigerator, wine/beverage refrigerator pantry and new lighting. The huge Conservatory with tray ceiling and walls of windows offers a lot of flexibility as an additional entertaining space, billiard room, sunroom, playroom, or future first floor guest suite—the options are endless. From the Conservatory, you have French doors leading to both the formal living room and the private study. The spacious powder room, laundry room/mudroom with access to the 3 car garage complete the main level. The secondary staircase from the kitchen provides



easy access to the 2nd level. Upstairs youâ€™ll find 4 generously sized bedrooms, with new carpeting and 3 full bathrooms. The Primary Bedroom features a sitting room, large walk in closet and spacious bathroom with soaking tub and glass paned shower and dual vanities with cathedral ceiling and skylights. Bedrooms 2 and 3 share a large jack and jill bathroom with double vanity. Bedroom 4 has an en suite full bathroom. All bedrooms have large windows, new carpeting and plenty of closet space. This home also features a full unfinished basement with extra ceiling height, NEWER roof with architectural shingles, NEWER water heater, NEWER floors, NEWER carpeting, NEWER paint, NEWER gourmet kitchen, NEWER lighting. Beautifully remodeled home with indoor outdoor living on 1 acre, surrounded by preserved farmland makes the perfect oasis. Horseshoe driveway for tons of parking and convenience. This home also is conveniently located with easy access to the train station and 95 for commuting to both Center City Philadelphia and NY/NJ. Minutes from both downtown Yardley Boro and Newtown Boro. The Makefields Highland Golf course is located nearby, as well as the Delaware Canal and Towpath. Don't miss this amazing home that is ready for you to move in and enjoy!

Built in 2000

### **Essential Information**

MLS® #	PABU2047468
Sold Price	\$1,200,000
Bedrooms	4
Bathrooms	3.50
Full Baths	3
Half Baths	1
Square Footage	4,597
Acres	1.01

Year Built	2000
Type	Residential
Sub-Type	Detached
Style	Colonial
Status	Closed
Sold Date	July 28th, 2023

### Community Information

Address	1791 Jockeys Way
Area	Lower Makefield Twp (10120)
Subdivision	BRIDLE ESTATES
City	YARDLEY
County	BUCKS-PA
State	PA
Zip Code	19067

### Amenities

Amenities	Additional Stairway, Attic, Built-Ins, Chair Railing, Crown Molding, Formal/Separate Dining Room, Skylight(s), Upgraded Countertops, Walk-in Closet(s), Wood Floors, Wainscotting
# of Garages	3
Garages	Garage - Side Entry, Garage Door Opener, Inside Access
View	Trees/Woods

### Interior

Interior Features	Floor Plan-Open
Appliances	Built-In Microwave, Dishwasher, Dryer, Oven-Self Cleaning, Cooktop, Stainless Steel Appliances, Refrigerator
Heating	Forced Air
Cooling	Central A/C
Fireplace	Yes
# of Fireplaces	1
# of Stories	2
Stories	2 Story

### Exterior

Exterior	Frame
Lot Description	Rear Yard, Adjoins - Open Space
Foundation	Concrete Perimeter

**School Information**

District                   PENNSBURY  
Elementary               AFTON

**Additional Information**

Zoning                    R1

**Listing Details**

Listing Office            Long & Foster Real Estate, Inc.

© 2024 TREND, All Rights Reserved. Information Deemed Reliable But Not Guaranteed.The data relating to real estate for sale on this website appears in part through the TREND Internet Data Exchange program, a voluntary cooperative exchange of property listing data between licensed real estate brokerage firms in which RE/MAX Elite Bucks County Real Estate participates, and is provided by TREND through a licensing agreement.The information provided by this website is for the personal, non-commercial use of consumers and may not be used for any purpose other than to identify prospective properties consumers may be interested in purchasing.Some properties which appear for sale on this website may no longer be available because they are under contract, have sold or are no longer being offered for sale.  
Listing information last updated on May 5th, 2024 at 5:46am EDT