

\$900,000 - 26 Union School Rd, UPPER BLACK EDDY

MLS® #PABU2049652

\$900,000

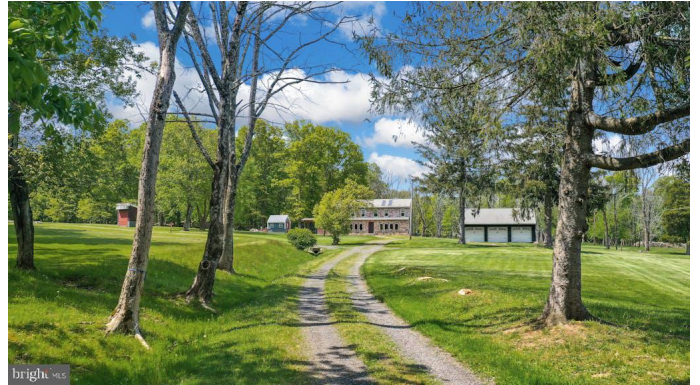
3 Bedroom, 2.50 Bathroom, 2,445 sqft
Residential on 15 Acres

NONE AVAILABLE, UPPER BLACK EDDY, PA

SHOWINGS START AT OPEN HOUSE 5/21 1-3PM! Cleared meadows and wooded acreage encircle this artist's retreat on a quiet road in upper Bucks County. What began as a small stone cottage built in 1885 has been expanded over the years into a gracious three bedroom home, as suitable for full-time living as it is for a weekend retreat.

Nearly every surface in this thoughtful home consists of reclaimed materials, sourced from other rooms, outbuildings, and the surrounding land. Bluestone and reclaimed random width oak floors run throughout most of the house, with the living room fireplace boasting a locally quarried stone ledge. Semi-custom Medallion cabinets in the kitchen are set off by gold-flecked granite countertops, a 6-burner electric AGA range, and a large commercial grade farmhouse sink. A first floor bedroom and laundry facilities are convenient amenities. Upstairs, the primary suite features a vaulted ceiling with hand-hewn pegged beams, a loft area with built-in shelving, en suite bath with soaking tub and large walk-in closet. Also on this floor is a second suite, with loft storage and abundant windows. Exterior amenities include an incredible 360-degree wraparound patio, a fully finished and heated office separate from the house, a 3-car detached garage and separate equipment shed.

Surrounded by 14.65 acres of peaceful countryside, Lyric Acres is a joy in every



season. Located just a short drive from commuter routes, 90 minutes to Philadelphia and NYC, and with easy access to shopping and dining destinations.

Built in 1885

Essential Information

MLS® #	PABU2049652
Sold Price	\$900,000
Bedrooms	3
Bathrooms	2.50
Full Baths	2
Half Baths	1
Square Footage	2,445
Acres	14.62
Year Built	1885
Type	Residential
Sub-Type	Detached
Style	Colonial
Status	Closed
Sold Date	August 4th, 2023

Community Information

Address	26 Union School Rd
Area	Tinicum Twp (10144)
Subdivision	NONE AVAILABLE
City	UPPER BLACK EDDY
County	BUCKS-PA
State	PA
Zip Code	18972

Amenities

Amenities	Built-Ins, CeilingFan(s), Entry Lvl BR, Exposed Beams, Pantry, Master Bath(s), Recessed Lighting, Skylight(s), Soaking Tub, Upgraded Countertops, Walk-in Closet(s), Water Treat System, Wood Floors
Parking	DW - Circular, Gravel Driveway
# of Garages	3
Garages	Additional Storage Area, Garage Door Opener

Interior

Heating	Baseboard - Hot Water
Cooling	Central A/C
Fireplace	Yes
# of Fireplaces	1
Fireplaces	Mantel(s), Stone
# of Stories	2
Stories	2 Story

Exterior

Exterior	Stone, HardiPlank, Cedar Siding
Exterior Features	Patio, Porch-wraparound
Roof	Asphalt
Foundation	Concrete Perimeter

School Information

District	PALISADES
----------	-----------

Additional Information

Zoning	RC
--------	----

Listing Details

Listing Office	Carol C Dorey Real Estate
----------------	---------------------------

© 2024 TREND, All Rights Reserved. Information Deemed Reliable But Not Guaranteed.The data relating to real estate for sale on this website appears in part through the TREND Internet Data Exchange program, a voluntary cooperative exchange of property listing data between licensed real estate brokerage firms in which RE/MAX Elite Bucks County Real Estate participates, and is provided by TREND through a licensing agreement.The information provided by this website is for the personal, non-commercial use of consumers and may not be used for any purpose other than to identify prospective properties consumers may be interested in purchasing.Some properties which appear for sale on this website may no longer be available because they are under contract, have sold or are no longer being offered for sale.

Listing information last updated on May 7th, 2024 at 6:30am EDT