

\$3,685 - 24 Cricket Ave #2b2ba, ARDMORE

MLS® #PAMC2053000

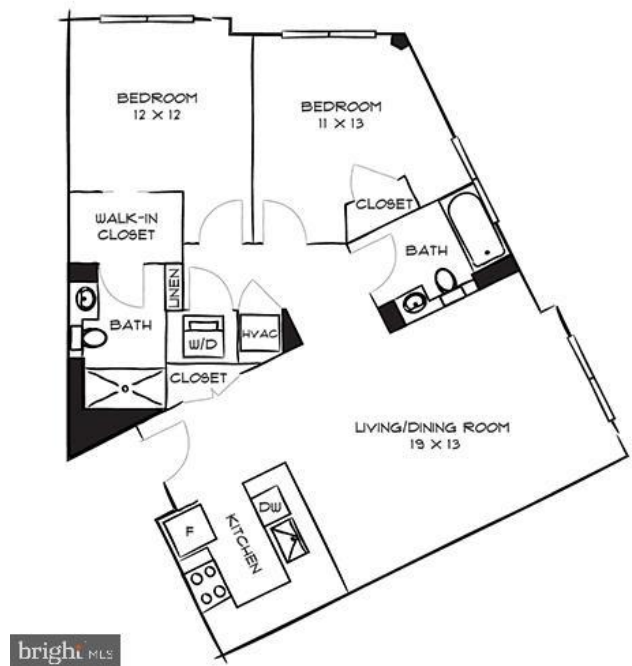
\$3,685

2 Bedroom, 2.00 Bathroom, 991 sqft

Residential Lease on 0 Acres

ARDMORE, ARDMORE, PA

This is your town, and you re a true local. One Ardmore was built for you; those looking for a home at the intersection of luxury and community - an urban suburban residence. We re committed to giving you room to grow. Built in the heart of the community you know and love. One Ardmore offers luxurious finishes, features and amenities. As a home deeply connected to the neighborhood, we boast amenities built for a community. Picture yourself grilling with old friends at the barbecue lounge, or making new ones over wine on the terrace. Relaxation is central to One Ardmore. Literally. Our 4th-floor terrace provides direct access to the clubhouse, fire pit lounge and grilling area. We are nothing if not accessible. One Ardmore is the gateway to your new stomping grounds - you ll always be central to all the excitement in town or in the city. We also have private parking on site. Your controlled access garage means you ll never have to worry about parking. Ever. Get in touch with us ASAP, and learn more about life in Ardmore - at One Ardmore! **Virtual tours available** ** Prices and availability subject to change on a daily basis ** Photos are of model units **



Built in 2019

Essential Information

MLS® #	PAMC2053000
Sold Price	\$3,685

Bedrooms	2
Bathrooms	2.00
Full Baths	2
Square Footage	991
Acres	0.00
Year Built	2019
Type	Residential Lease
Sub-Type	Unit/Flat/Apartment, Hi-Rise 9+ Floors
Style	Other
Status	Closed
Sold Date	August 5th, 2023

Community Information

Address	24 Cricket Ave #2b2ba
Area	Lower Merion Twp (10640)
Subdivision	ARDMORE
City	ARDMORE
County	MONTGOMERY-PA
State	PA
Zip Code	19003

Amenities

Amenities	Walk-in Closet(s), Upgraded Countertops
-----------	---

Interior

Appliances	Dishwasher, Stove, Microwave, Refrigerator, Stainless Steel Appliances, Washer, Dryer
Heating	Forced Air
Cooling	Central A/C
# of Stories	1
Stories	1 Story

School Information

District	LOWER MERION
----------	--------------

Additional Information

Zoning	NA
--------	----

Listing Details

Listing Office	Keller Williams Philadelphia
----------------	------------------------------

© 2024 TREND, All Rights Reserved. Information Deemed Reliable But Not Guaranteed. The data relating to real estate for sale on this website appears in part through the TREND Internet Data Exchange program, a voluntary cooperative exchange of property listing data between licensed real estate brokerage firms in which RE/MAX Elite Bucks County Real Estate participates, and is provided by TREND through a licensing agreement. The information provided by this website is for the personal, non-commercial use of consumers and may not be used for any purpose other than to identify prospective properties consumers may be interested in purchasing. Some properties which appear for sale on this website may no longer be available because they are under contract, have sold or are no longer being offered for sale.

Listing information last updated on May 17th, 2024 at 11:45pm EDT