

# \$35 - 3 W Lancaster Ave, ARDMORE

MLS® #PAMC2059982

**\$35**

0 Bedroom, 0.00 Bathroom, 1,000 sqft  
Commercial Lease on 0 Acres

N/A, ARDMORE, PA

This property is located at the entrance to suburban square shopping center.  
Septa & Amtrak are directly across the street.

Built in 1925

## Essential Information

|                |                  |
|----------------|------------------|
| MLS® #         | PAMC2059982      |
| Sold Price     | \$35             |
| Bathrooms      | 0.00             |
| Square Footage | 1,000            |
| Acres          | 0.16             |
| Year Built     | 1925             |
| Type           | Commercial Lease |
| Sub-Type       | Retail           |
| Status         | Closed           |
| Sold Date      | June 20th, 2023  |

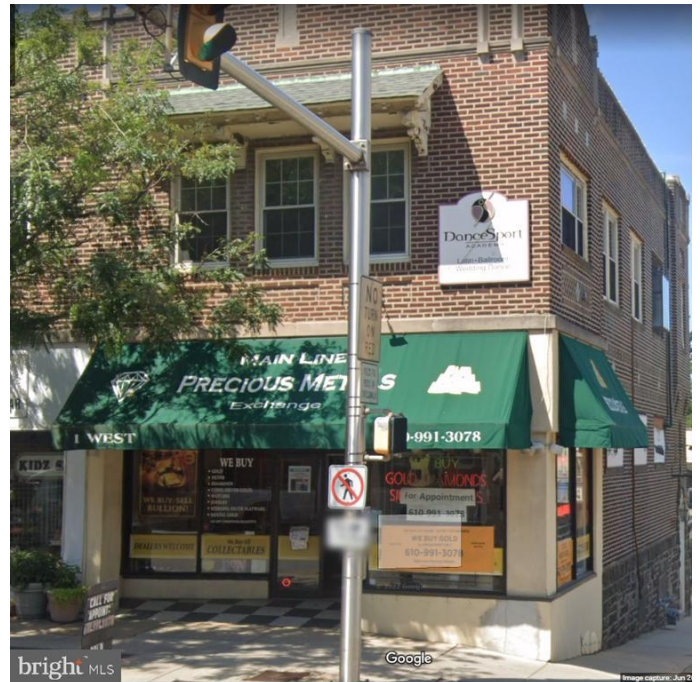
## Community Information

|             |                          |
|-------------|--------------------------|
| Address     | 3 W Lancaster Ave        |
| Area        | Lower Merion Twp (10640) |
| Subdivision | N/A                      |
| City        | ARDMORE                  |
| County      | MONTGOMERY-PA            |
| State       | PA                       |
| Zip Code    | 19003                    |

## Amenities

|         |          |
|---------|----------|
| Parking | PublPark |
|---------|----------|

## Interior



|         |                        |
|---------|------------------------|
| Heating | Heat Pump - Oil BackUp |
| Cooling | Roof Mounted           |

**Exterior**

|          |       |
|----------|-------|
| Exterior | Frame |
|----------|-------|

**School Information**

|          |              |
|----------|--------------|
| District | LOWER MERION |
| Middle   | WELSH VALLEY |

**Additional Information**

|        |            |
|--------|------------|
| Zoning | COMMERCIAL |
|--------|------------|

**Listing Details**

|                |                            |
|----------------|----------------------------|
| Listing Office | Main Line Executive Realty |
|----------------|----------------------------|

© 2024 TREND, All Rights Reserved. Information Deemed Reliable But Not Guaranteed.The data relating to real estate for sale on this website appears in part through the TREND Internet Data Exchange program, a voluntary cooperative exchange of property listing data between licensed real estate brokerage firms in which RE/MAX Elite Bucks County Real Estate participates, and is provided by TREND through a licensing agreement.The information provided by this website is for the personal, non-commercial use of consumers and may not be used for any purpose other than to identify prospective properties consumers may be interested in purchasing.Some properties which appear for sale on this website may no longer be available because they are under contract, have sold or are no longer being offered for sale.

Listing information last updated on May 17th, 2024 at 11:45pm EDT