

\$3,754 - 24 Cricket Avenue #2b2ba, ARDMORE

MLS® #PAMC2071440

\$3,754

2 Bedroom, 2.00 Bathroom, 991 sqft

Residential Lease on 0 Acres

ARDMORE, ARDMORE, PA

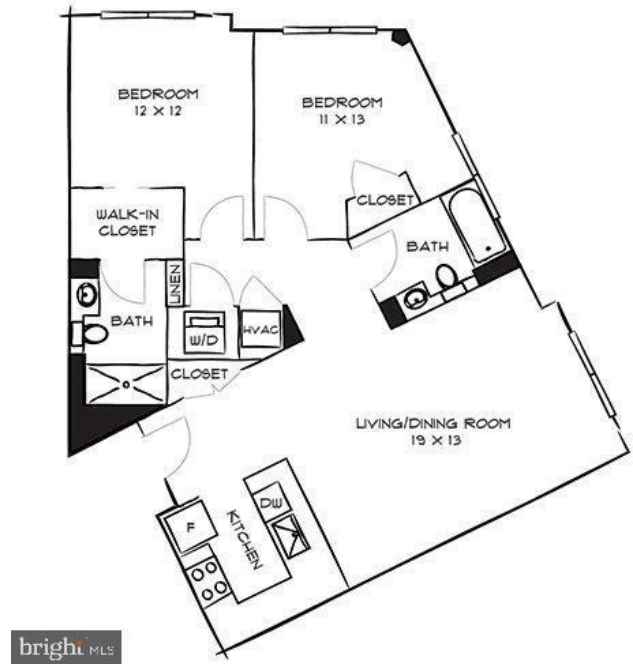
Welcome to One Ardmore, a premier residential community located in the heart of vibrant Ardmore, PA. The apartment building is promising comfort, luxury, and convenient living.

Our residences offer a wide array of stylish and spacious one, two, and three-bedroom layouts. Each unit is equipped with state-of-the-art appliances, modern kitchens with quartz countertops, in-unit laundry facilities, and hardwood flooring. Balconies in select units provide sweeping views of Ardmore's charming cityscape.

The community amenities at One Ardmore are designed with your comfort and enjoyment in mind. They include a top-notch fitness center, a business center for those who need a quiet workspace, and a beautifully maintained outdoor terrace for gatherings and relaxing evenings. We also provide secure, on-site parking for residents.

The location of One Ardmore is hard to beat. You'll find yourself within walking distance of Ardmore's top-notch restaurants, shopping destinations, and recreational facilities. The close proximity to public transportation, including SEPTA regional rail, offers an easy commute to Center City Philadelphia.

One Ardmore offers an upscale living experience, combining luxury, convenience,



and a wonderful community. We take pride in our dedication to top-tier customer service and are eager to make One Ardmore your new home.

Please contact us to schedule a tour and learn more about the exceptional living experience that awaits at One Ardmore.

** Pricing and availability subject to change on daily basis ** Photos are of model units **

Built in 2019

Essential Information

| | |
|----------------|----------------------------------------|
| MLS® # | PAMC2071440 |
| Sold Price | \$3,754 |
| Bedrooms | 2 |
| Bathrooms | 2.00 |
| Full Baths | 2 |
| Square Footage | 991 |
| Acres | 0.00 |
| Year Built | 2019 |
| Type | Residential Lease |
| Sub-Type | Unit/Flat/Apartment, Hi-Rise 9+ Floors |
| Style | Other |
| Status | Closed |
| Sold Date | August 7th, 2023 |

Community Information

| | |
|-------------|--------------------------|
| Address | 24 Cricket Avenue #2b2ba |
| Area | Lower Merion Twp (10640) |
| Subdivision | ARDMORE |
| City | ARDMORE |
| County | MONTGOMERY-PA |
| State | PA |
| Zip Code | 19003 |

Interior

| | |
|---------|------------|
| Heating | Forced Air |
|---------|------------|

| | |
|--------------|-------------|
| Cooling | Central A/C |
| # of Stories | 1 |
| Stories | 1 Story |

School Information

| | |
|----------|--------------|
| District | LOWER MERION |
|----------|--------------|

Additional Information

| | |
|--------|----|
| Zoning | NA |
|--------|----|

Listing Details

| | |
|----------------|------------------------------|
| Listing Office | Keller Williams Philadelphia |
|----------------|------------------------------|

© 2024 TREND, All Rights Reserved. Information Deemed Reliable But Not Guaranteed.The data relating to real estate for sale on this website appears in part through the TREND Internet Data Exchange program, a voluntary cooperative exchange of property listing data between licensed real estate brokerage firms in which RE/MAX Elite Bucks County Real Estate participates, and is provided by TREND through a licensing agreement.The information provided by this website is for the personal, non-commercial use of consumers and may not be used for any purpose other than to identify prospective properties consumers may be interested in purchasing.Some properties which appear for sale on this website may no longer be available because they are under contract, have sold or are no longer being offered for sale.

Listing information last updated on May 18th, 2024 at 1:00am EDT