

\$2,705 - 24 Cricket Avenue #1b1ba, ARDMORE

MLS® #PAMC2071980

\$2,705

1 Bedroom, 1.00 Bathroom, 776 sqft
Residential Lease on 0 Acres

ARDMORE, ARDMORE, PA

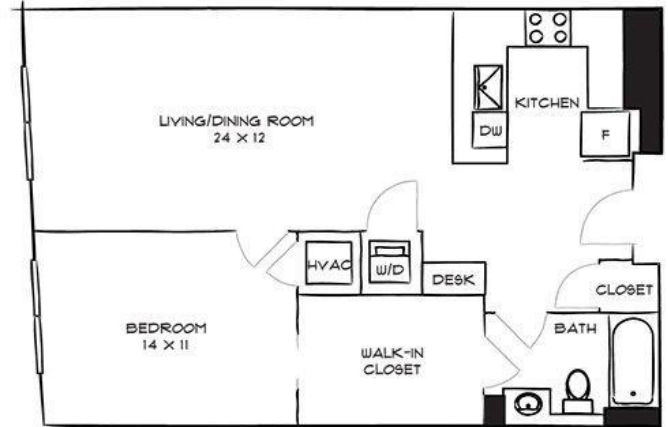
Welcome to One Ardmore, a premier residential community located in the heart of vibrant Ardmore, PA. The apartment building is promising comfort, luxury, and convenient living.

Our residences offer a wide array of stylish and spacious one, two, and three-bedroom layouts. Each unit is equipped with state-of-the-art appliances, modern kitchens with quartz countertops, in-unit laundry facilities, and hardwood flooring. Balconies in select units provide sweeping views of Ardmore's charming cityscape.

The community amenities at One Ardmore are designed with your comfort and enjoyment in mind. They include a top-notch fitness center, a business center for those who need a quiet workspace, and a beautifully maintained outdoor terrace for gatherings and relaxing evenings. We also provide secure, on-site parking for residents.

The location of One Ardmore is hard to beat. You'll find yourself within walking distance of Ardmore's top-notch restaurants, shopping destinations, and recreational facilities. The close proximity to public transportation, including SEPTA regional rail, offers an easy commute to Center City Philadelphia.

One Ardmore offers an upscale living experience, combining luxury, convenience,



and a wonderful community. We take pride in our dedication to top-tier customer service and are eager to make One Ardmore your new home.

Please contact us to schedule a tour and learn more about the exceptional living experience that awaits at One Ardmore.

** Pricing and availability subject to change on daily basis ** Photos are of model units **

Built in 2019

Essential Information

MLS® #	PAMC2071980
Sold Price	\$2,705
Bedrooms	1
Bathrooms	1.00
Full Baths	1
Square Footage	776
Acres	0.00
Year Built	2019
Type	Residential Lease
Sub-Type	Unit/Flat/Apartment, Hi-Rise 9+ Floors
Style	Other
Status	Closed
Sold Date	August 7th, 2023

Community Information

Address	24 Cricket Avenue #1b1ba
Area	Lower Merion Twp (10640)
Subdivision	ARDMORE
City	ARDMORE
County	MONTGOMERY-PA
State	PA
Zip Code	19003

Interior

Heating	Forced Air
---------	------------

Cooling	Central A/C
# of Stories	1
Stories	1 Story

School Information

District	LOWER MERION
----------	--------------

Additional Information

Zoning	NA
--------	----

Listing Details

Listing Office	Keller Williams Philadelphia
----------------	------------------------------

© 2024 TREND, All Rights Reserved. Information Deemed Reliable But Not Guaranteed.The data relating to real estate for sale on this website appears in part through the TREND Internet Data Exchange program, a voluntary cooperative exchange of property listing data between licensed real estate brokerage firms in which RE/MAX Elite Bucks County Real Estate participates, and is provided by TREND through a licensing agreement.The information provided by this website is for the personal, non-commercial use of consumers and may not be used for any purpose other than to identify prospective properties consumers may be interested in purchasing.Some properties which appear for sale on this website may no longer be available because they are under contract, have sold or are no longer being offered for sale.

Listing information last updated on May 18th, 2024 at 2:30am EDT