

\$310,000 - 225 N Main St, AMBLER

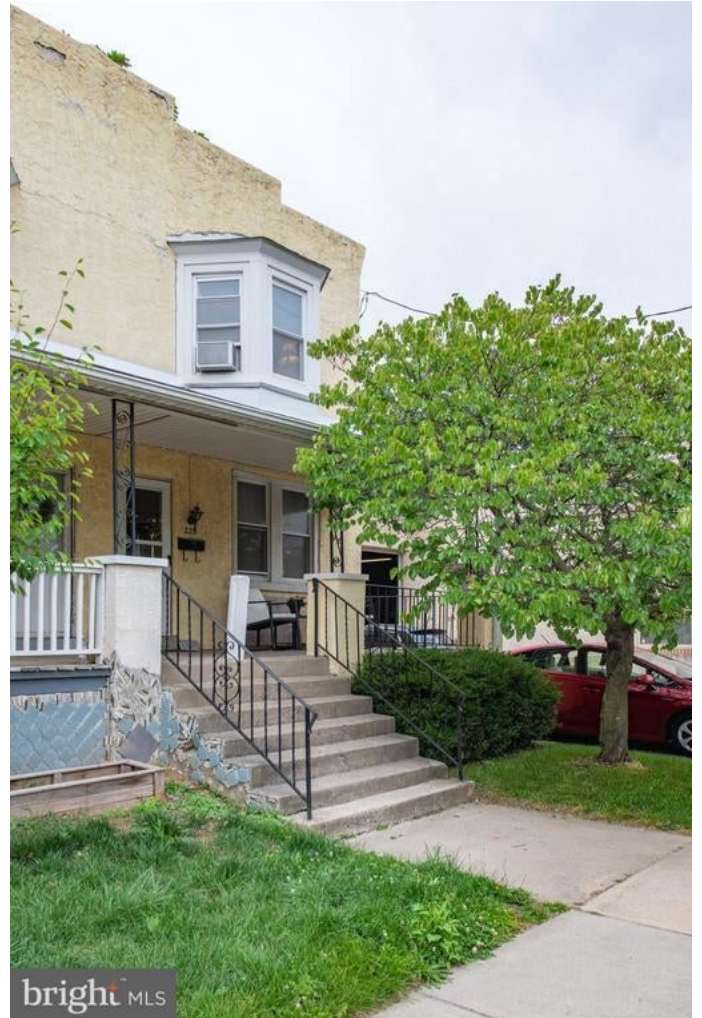
MLS® #PAMC2076320

\$310,000

3 Bedroom, 1.00 Bathroom, 1,396 sqft
Residential on 0 Acres

AMBLER HOUSE, AMBLER, PA

Gorgeous upgrades! This lovely Ambler Borough twin has a driveway, front porch, fenced backyard, it is a short distance from downtown Ambler and is located in Wissahickon School District. The kitchen in this home was remodeled to maximize space and style. It includes beautiful subway tile, many cabinets, vast countertop space, and a breakfast nook to relax in. The first floor laundry room is just beyond the kitchen. The second floor has a sleek full bathroom, all newer flooring, and three bedrooms. 2 open houses are scheduled for this beauty: Thursday 6/29 from 4pm to 6pm, and Saturday July 1 from 10am to Noon. Private showings begin on Thursday 6/29.



Built in 1920

Essential Information

MLS® #	PAMC2076320
Sold Price	\$310,000
Bedrooms	3
Bathrooms	1.00
Full Baths	1
Square Footage	1,396
Acres	0.06
Year Built	1920
Type	Residential
Sub-Type	Twin/Semi-Detached
Style	Side-by-Side

Status	Closed
Sold Date	August 11th, 2023

Community Information

Address	225 N Main St
Area	Ambler Boro (10601)
Subdivision	AMBLER HOUSE
City	AMBLER
County	MONTGOMERY-PA
State	PA
Zip Code	19002

Amenities

Amenities	CeilingFan(s), Wd Stove Insrt
-----------	-------------------------------

Interior

Appliances	Built-In Range, Dishwasher
Heating	Hot Water
Cooling	Ductless/Mini-Split
Fireplace	Yes
# of Fireplaces	1
# of Stories	2
Stories	2 Story

Exterior

Exterior Features	Sidewalks, Street Lights, Porch(es), Fenced-Fully, Fenced-Rear, Wood Fence
Lot Description	Rear Yard
Foundation	Stone

School Information

District	WISSAHICKON
High	WISSAHICKON SENIOR

Additional Information

Zoning	LI
--------	----

Listing Details

Listing Office	Equity Pennsylvania Real Estate
----------------	---------------------------------

for sale on this website appears in part through the TREND Internet Data Exchange program, a voluntary cooperative exchange of property listing data between licensed real estate brokerage firms in which RE/MAX Elite Bucks County Real Estate participates, and is provided by TREND through a licensing agreement. The information provided by this website is for the personal, non-commercial use of consumers and may not be used for any purpose other than to identify prospective properties consumers may be interested in purchasing. Some properties which appear for sale on this website may no longer be available because they are under contract, have sold or are no longer being offered for sale.

Listing information last updated on May 18th, 2024 at 4:15am EDT